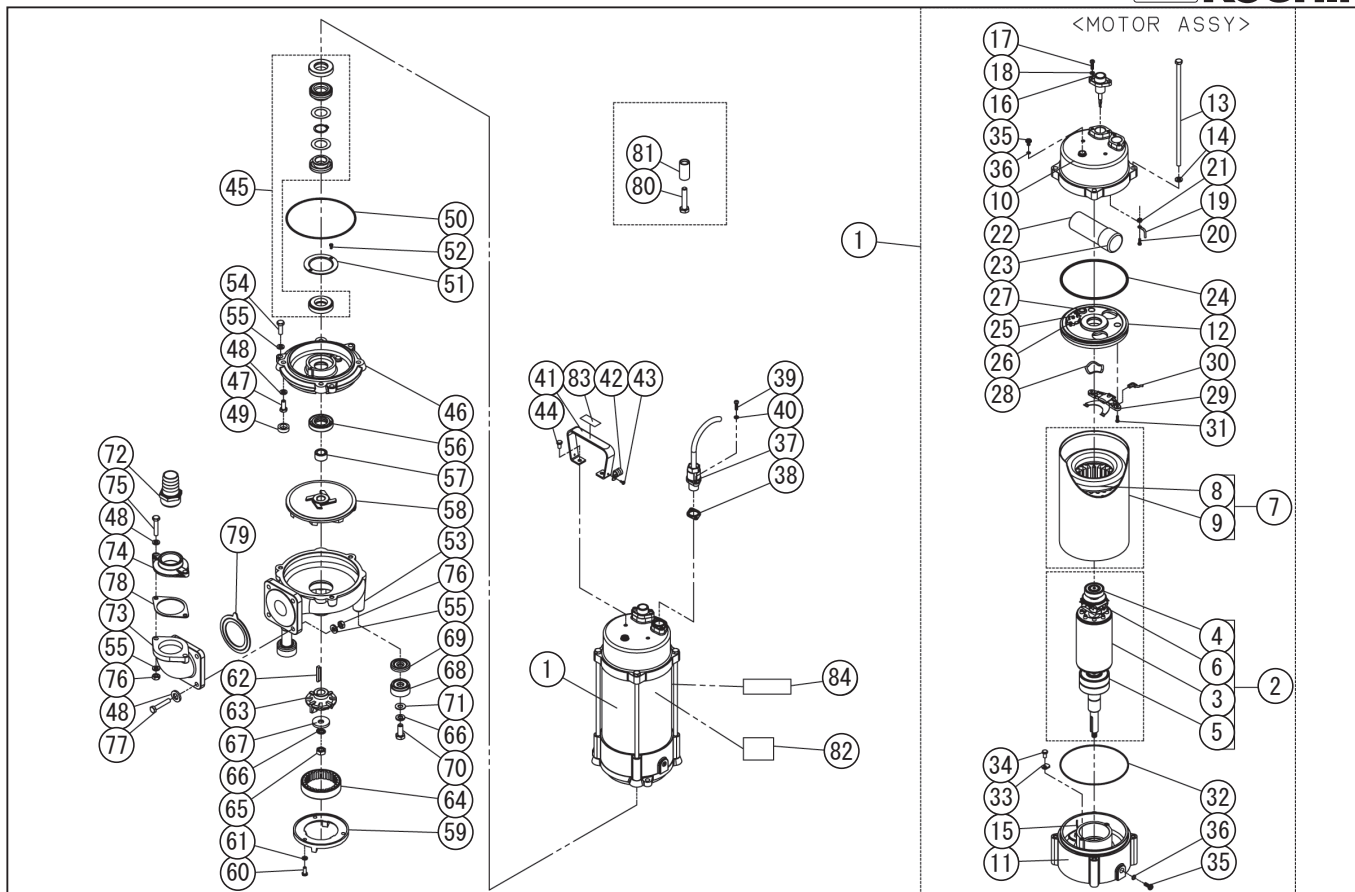


DWG No.077851101 MODELE : PKG-1200 FORM : PKG-1200-BAB-0

| No. | PARTS CODE | PARTS NAME | QTY | MATERIAL/SIZE | REMARKS |
|-----|------------|--------------------|-----|---------------|---------|
| 1 | 0778006 | MOTOR ASSY | 1 | | |
| 2 | 0778007 | ROTOR ASSY | 1 | | |
| 3 | 0770097 | ROTOR | 1 | SUS | |
| 4 | 0770004 | BEARING | 1 | 6203LLB | |
| 5 | 0770001 | BEARING | 1 | 6304LLB+DB | |
| 6 | 0770003 | GOVERNOR SWITCH | 1 | | |
| 7 | 0778008 | STATOR ASSY | 1 | | |
| 8 | 0770098 | STATOR | 1 | | |
| 9 | 0770005 | MOTOR CASING | 1 | SUS | |
| 10 | 0770016 | UPPER COVER | 1 | FC | |
| 11 | 0770012 | MOTOR BOTTOM COVER | 1 | FC | |
| 12 | 0770013 | MOTOR UPPER COVER | 1 | FC | |
| 13 | 0770028 | SCREW | 4 | M8X225 | |
| 14 | 0770029 | WASHER | 4 | M8 | |
| 15 | 0770019 | PROBE & STAND | 1 | | |
| 16 | 0770017 | SENSOR GLAND | 1 | | |
| 17 | 0770030 | SCREW | 2 | M5X18 | |
| 18 | 0770031 | WASHER | 2 | M5 | |
| 19 | 0770020 | EARTH | 1 | 155MM | |
| 20 | 0770032 | SCREW | 1 | M4X6 | |
| 21 | 0770033 | WASHER | 1 | M4 | |
| 22 | 0770100 | CAPACITOR | 1 | 100UFD-400V | |
| 23 | 0770023 | SPACER | 1 | | |
| 24 | 0770024 | ORING | 1 | NBR | |
| 25 | 0770099 | OVERLOAD PROTECTOR | 1 | | |
| 26 | 0770027 | SCREW | 2 | M4X12 | |
| 27 | 0770022 | GROMMET | 1 | NBR | |
| 28 | 0770011 | WAVE WASHER | 1 | 6203 | |
| 29 | 0770010 | CENTRIFUGAL | 1 | | |
| 30 | 0770018 | FLEX | 1 | 175MM | |

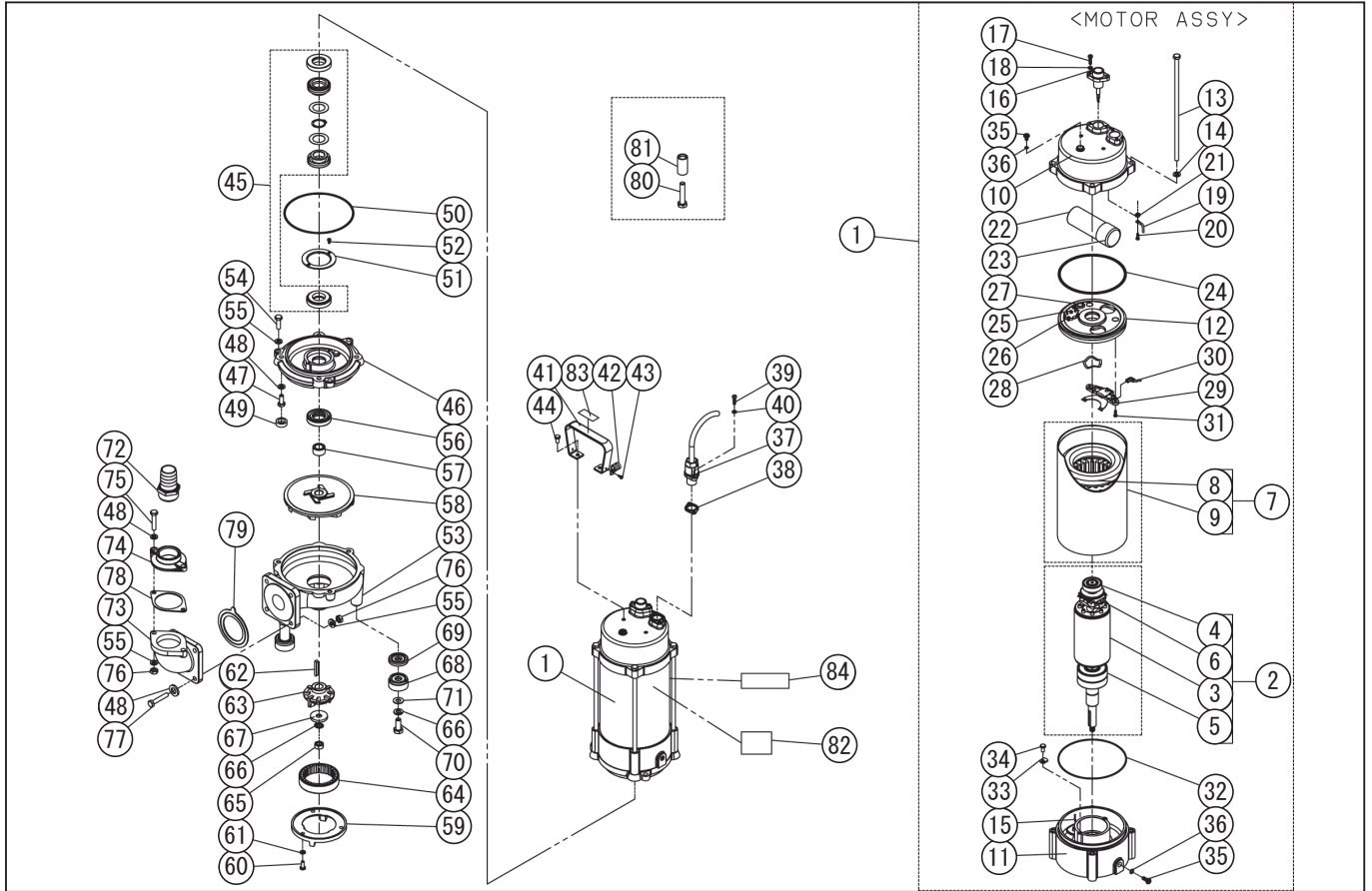
◆ Bare engine can not be supplied



DWG No.077851101 MODELE : PKG-1200 FORM : PKG-1200-BAB-0

| No. | PARTS CODE | PARTS NAME | QTY | MATERIAL/SIZE | REMARKS |
|-----|------------|----------------------|-----|---------------|---------|
| 31 | 0770026 | SCREW | 2 | M4X12 | |
| 32 | 0770021 | ORING | 1 | NBR | |
| 33 | 0770009 | BEARING COVER | 2 | SUS | |
| 34 | 0770025 | SCREW | 2 | M6X12 | |
| 35 | 0770007 | PLUG | 2 | M6X8 | |
| 36 | 0770008 | ORING | 2 | NBR | |
| 37 | 0778009 | CABLE ASSY | 1 | | |
| 38 | 0770081 | GASKET | 1 | SILICONE | |
| 39 | 0770030 | SCREW | 2 | M5X18 | |
| 40 | 0770031 | WASHER | 2 | M5 | |
| 41 | 0770309 | HANDLE | 1 | SUS | |
| 42 | 0770102 | CABLE CLAMPS | 1 | UC2 NYLON | |
| 43 | 0770091 | SCREW | 1 | M4X8 | |
| 44 | 0770025 | SCREW | 2 | M6X12 | |
| 45 | 0778005 | MECHANICAL SEAL ASSY | 1 | φ 20 C/C,S/C | |
| 46 | 0770049 | COVER OF OIL CHAMBER | 1 | FC | |
| 47 | 0770089 | SCREW | 4 | M8X20 | |
| 48 | 0770090 | WASHER | 10 | M8 | |
| 49 | 0770080 | GASKET | 4 | NBR | |
| 50 | 0770079 | ORING | 1 | NBR | |
| 51 | 0770052 | SEAL COVER | 1 | SUS | |
| 52 | 0770104 | SCREW | 2 | M4X8 | |
| 53 | 0770048 | PUMP HOUSING | 1 | FCD | |
| 54 | 0770092 | SCREW | 3 | M8X25 | |
| 55 | 0770029 | WASHER | 9 | M8 SUS | |
| 56 | 0770050 | LIP SEAL | 1 | NBR | |
| 57 | 0770051 | SHAFT SLEEVE | 1 | SUS | |
| 58 | 0770101 | IMPELLER | 1 | FCD | |
| 59 | 0770046 | SHREDDING RING COVER | 1 | FCD | |
| 60 | 0770087 | SCREW | 1 | M6X15 | |

◆ Bare engine can not be supplied



DWG No.077851101 MODELE : PKG-1200 FORM : PKG-1200-BAB-0

| No. | PARTS CODE | PARTS NAME | QTY | MATERIAL/SIZE | REMARKS |
|-----|------------|---------------------------|-------|---------------------------------|---------|
| 61 | 0770088 | WASHER | 3 | M6 | |
| 62 | 0770305 | WASHER | 1 | SUS | |
| 63 | 0770047 | KEY | 1 | SUS | |
| 64 | 0770044 | GRINDER IMPELLER | 1 | HICR | |
| 65 | 0770045 | SHREDDING RING | 1 | HICR | |
| 66 | 0770041 | NUT | 1 | M10 | |
| 67 | 0770042 | WASHER | 4 | M10 | |
| 68 | 0770039 | BOTTOM PLATE COVER | 3 | SUS | |
| 69 | 0770038 | CUSHION | 3 | NBR | |
| 70 | 0770084 | SCREW | 3 | M10X25 | |
| 71 | 0770085 | WASHER | 3 | M10 | |
| 72 | 0770310 | DISCHARGE OUTLET | 1 | 1 1/4" PP | |
| 73 | 0770077 | ELBOW | 1 | 2" FC | |
| 74 | 0770103 | FLANGE | 1 | 1 1/4" PS FC | |
| 75 | 0770096 | SCREW | 2 | M8X40 | |
| 76 | 0770095 | NUT | 6 | M8 | |
| 77 | 0770094 | SCREW | 4 | M8X45 | |
| 78 | 0770083 | GASKET | 1 | 2" NBR | |
| 79 | 0770082 | GASKET | 1 | 2" NBR | |
| 80 | 0770040 | CANNULA | 3 | SUS | |
| 81 | 0770086 | SCREW | 3 | M10X60 | |
| 82 | 0770294 | PKG-1200 NAME PLATE LABEL | 1 | PET | |
| 83 | 0770306 | CAUTION LABEL | 1 | POLYESTER | |
| | 0770071 | PKG-1200 PACKING CASE | 1 | | |
| | 0778062 | MANUAL ASSY | 1 | | |
| | 0770053 | MANUAL | 1 | | |
| | 0770058 | PKG SPECIFICATION | 1 | | |
| | 0770054 | DECLARATION | 1 | | |
| 84 | 0770304 | LOGO LABEL | 1 | PET | |
| | 0770307 | OIL | 0.425 | SHELL VITREA OIL ISOVG32 1000CC | |

◆ Bare engine can not be supplied